

Seznam materiálu nutného k výrobě Samovy pásovky:

motor typ 1LA7 090-6AA10, 0,75kW, osa 90mm, 915 ot/min, 2400,-
unášecí kolo Ø 334x50mm 600,-
silonová kladka Ø 34x50mm 2x300,-
ložisko Ø 12/28-8mm 6001THN 4x44,-
hřídel KDR typ HOP 160 NB 750,-
řemenice SPA 125/1 TB 352,-
klínový řemen 13x10 obvod ~990mm = ~70,-
brusné pásy šíře 50mm obvod 1540mm = 240,-
Jäckel 80x35x2 3,4m x 190 = 646,-
Jäckel 70x30x2 0,35m x 170 = 60,-
pásovina 30x7mm 0.2m = 25,-
plech 200x260x6mm = 150,-
plech 230x40x6mm = 40,-
plech 140x140x5mm = 80,-
plech 140x100x5mm = 70,-
plech 300x30x5mm = 60,-
pásovina 30x7mm 0.2m = 25,-
pant (kulatiny v sobě) 2x20 = 40,-
pružina 30x280mm 500,-
šrouby + matice M8, M10, M12 = 100,-
kulatina na čepy Ø 14 x 240mm = 25,-

Cena materiálu celkem: **6600,-**

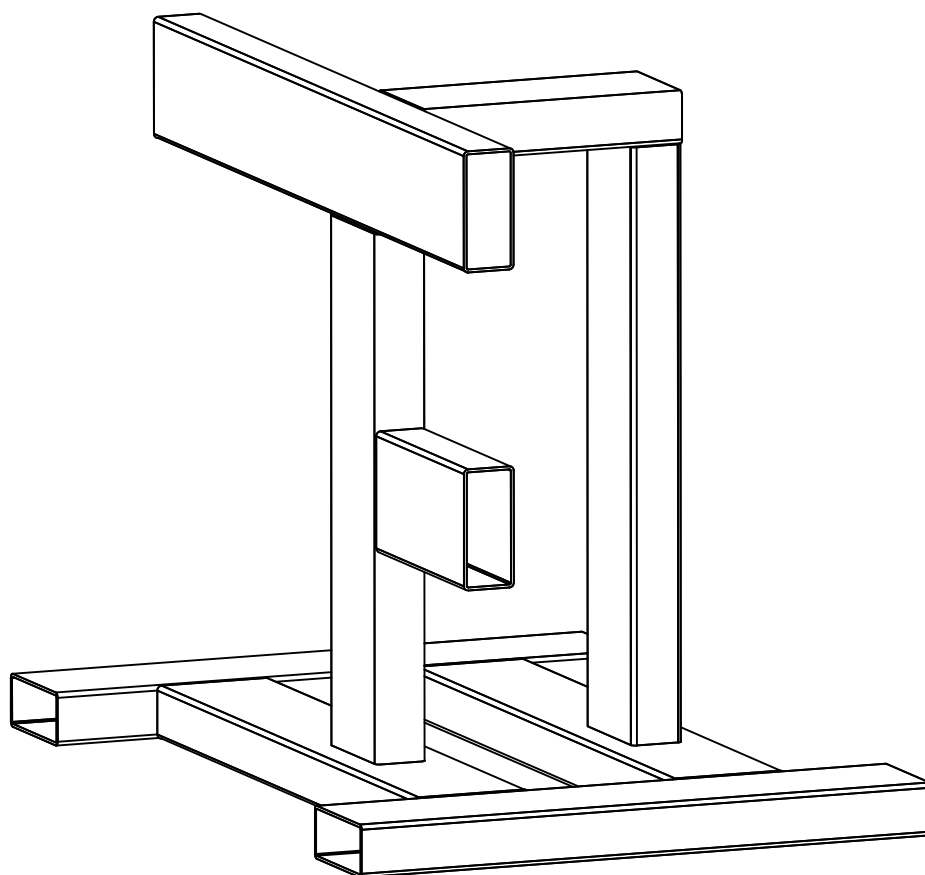
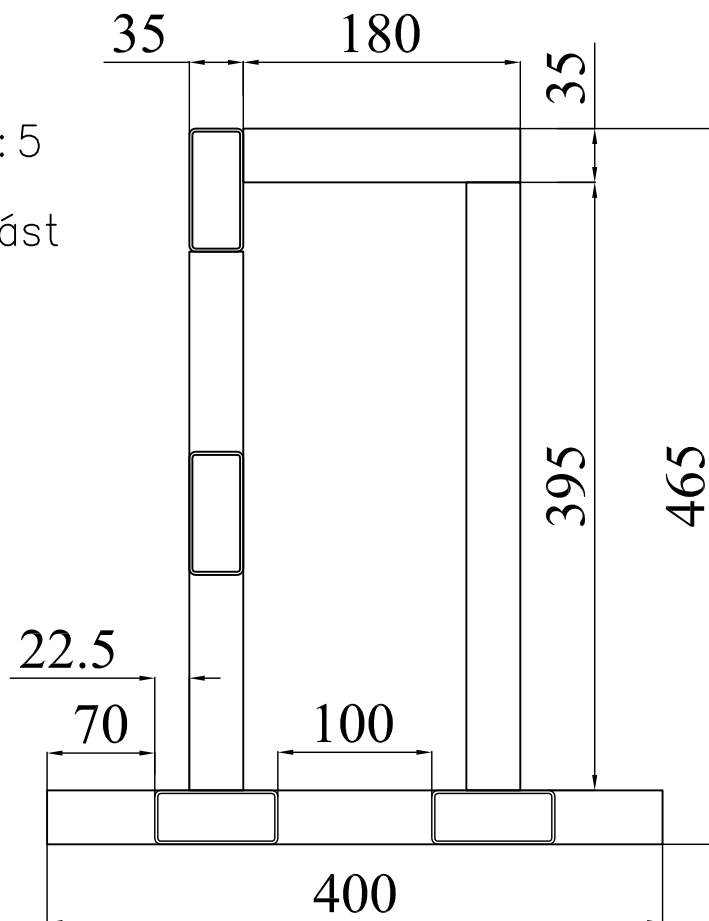
možné příplatky:

dvourychlostní motor typ 1LA7 096-0AB60, 750 / 1500 ot/min, osa 90mm, 05 / 0.7kW navíc 971,-
hřídel KDR s vrtací hlavou u řemenice typ HOP 160 VHB navíc 580,-

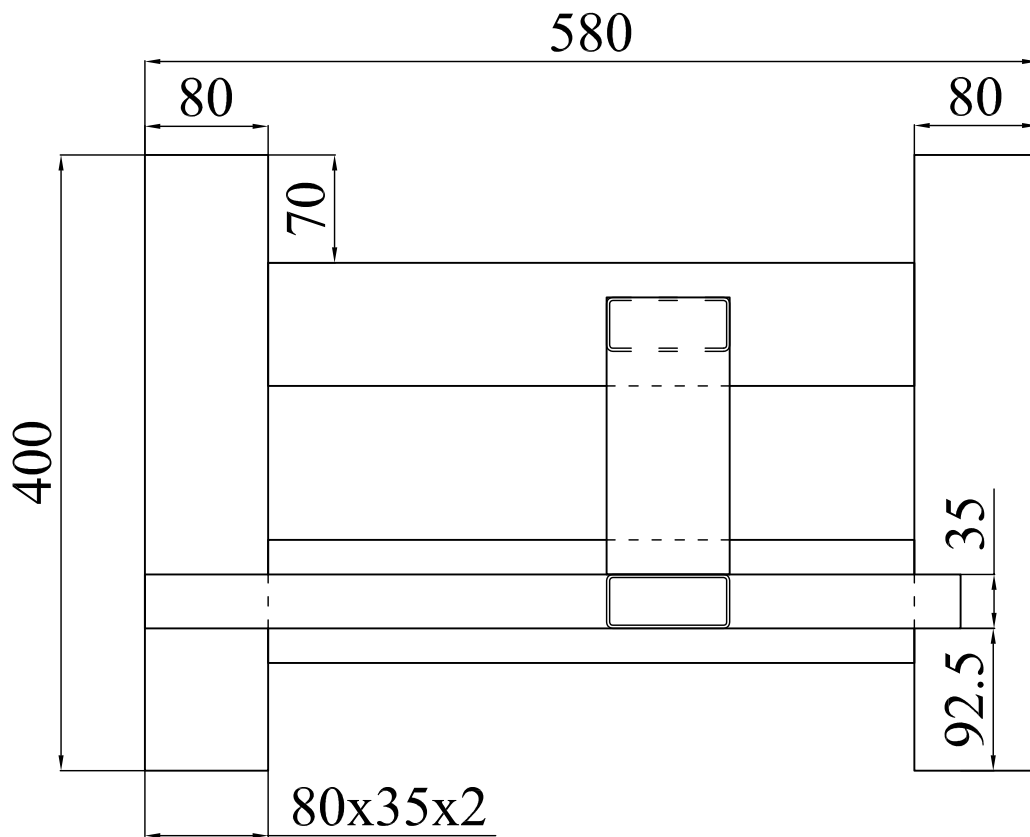
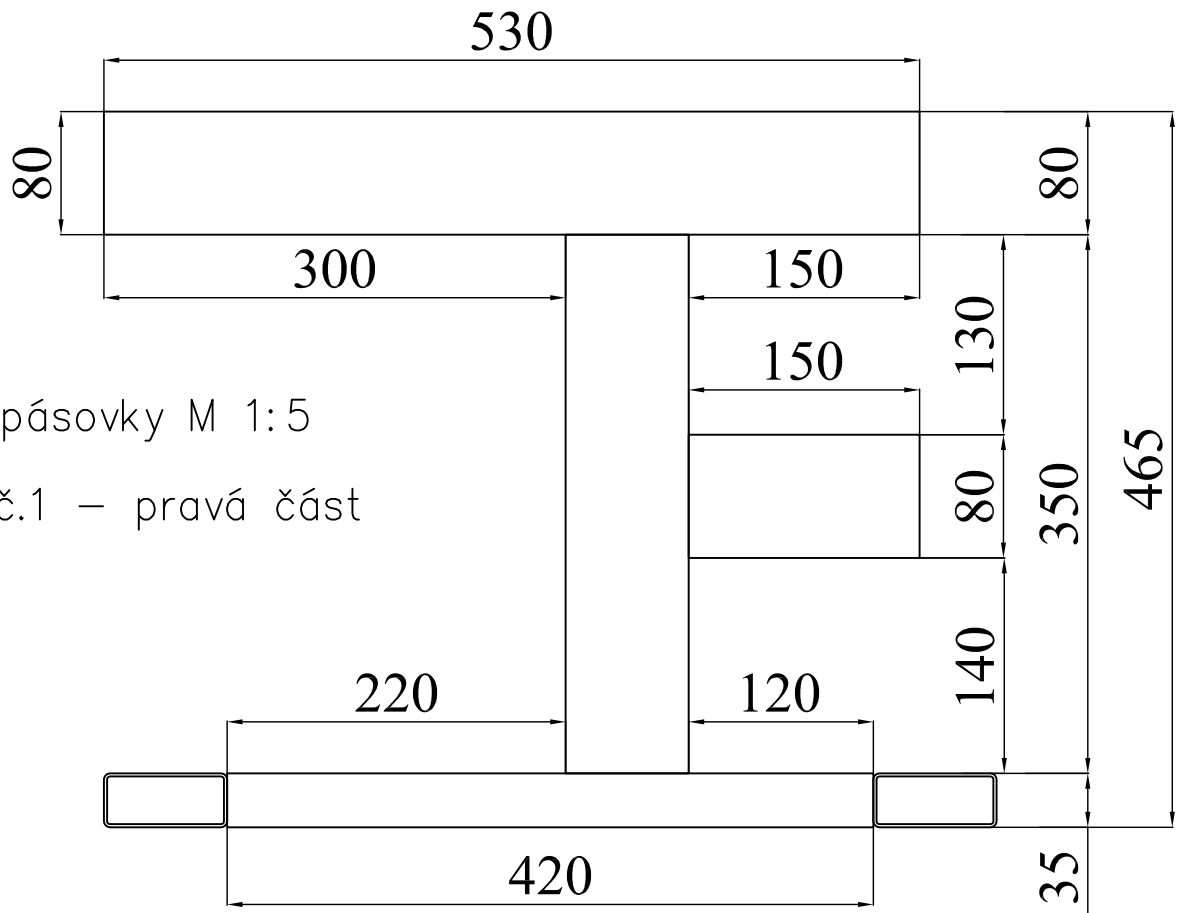
Pásovku vytvořil a nakreslil 25.7.2006

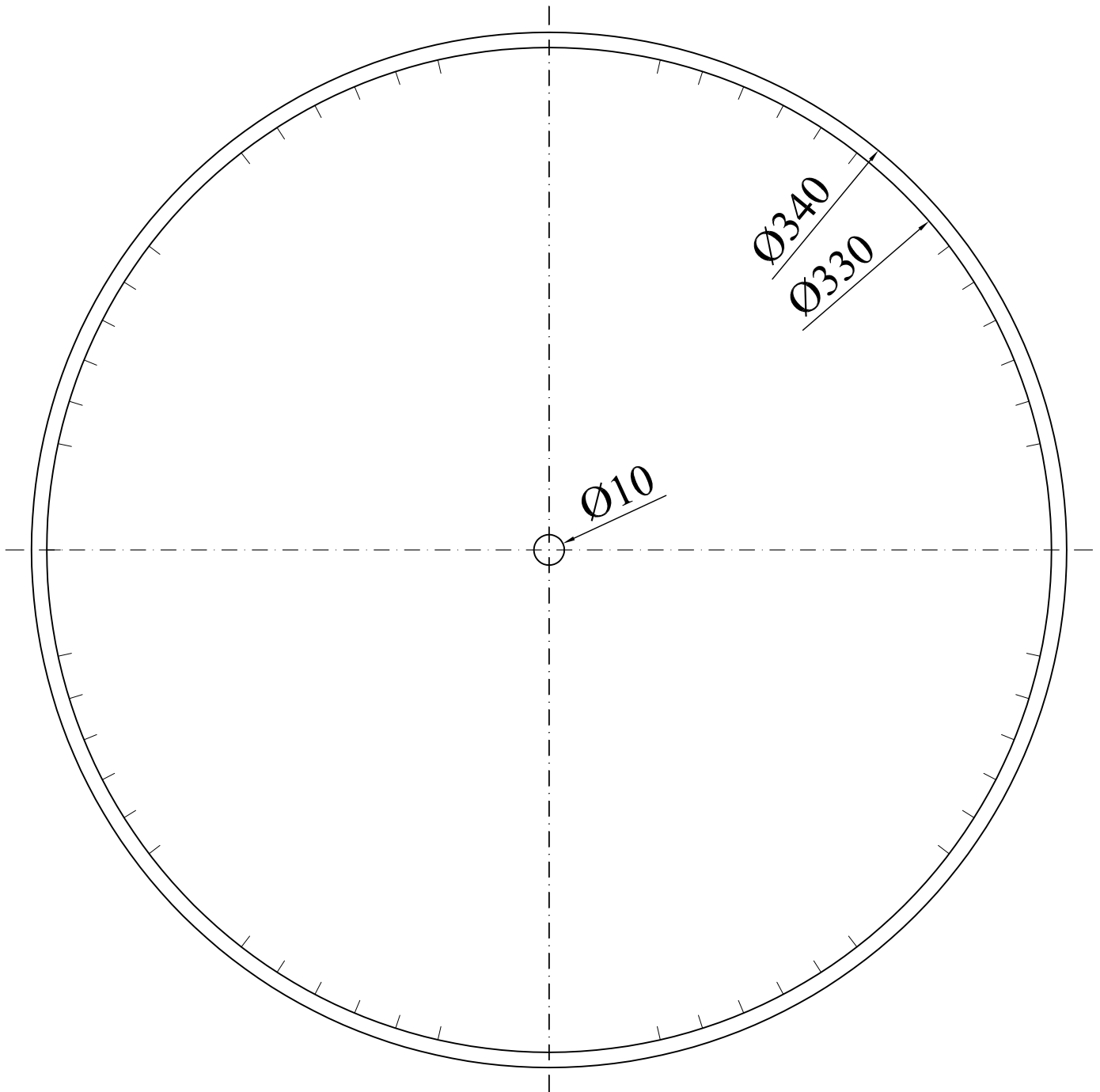
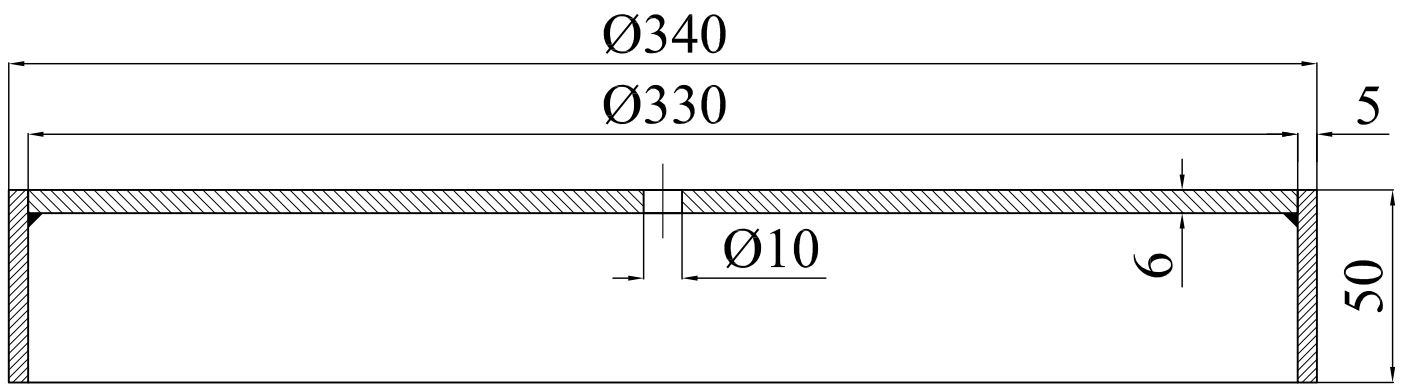
© Pavel Polášek alias **Samurai**

Kostrá pásovky M 1:5
výkres č.1 – levá část



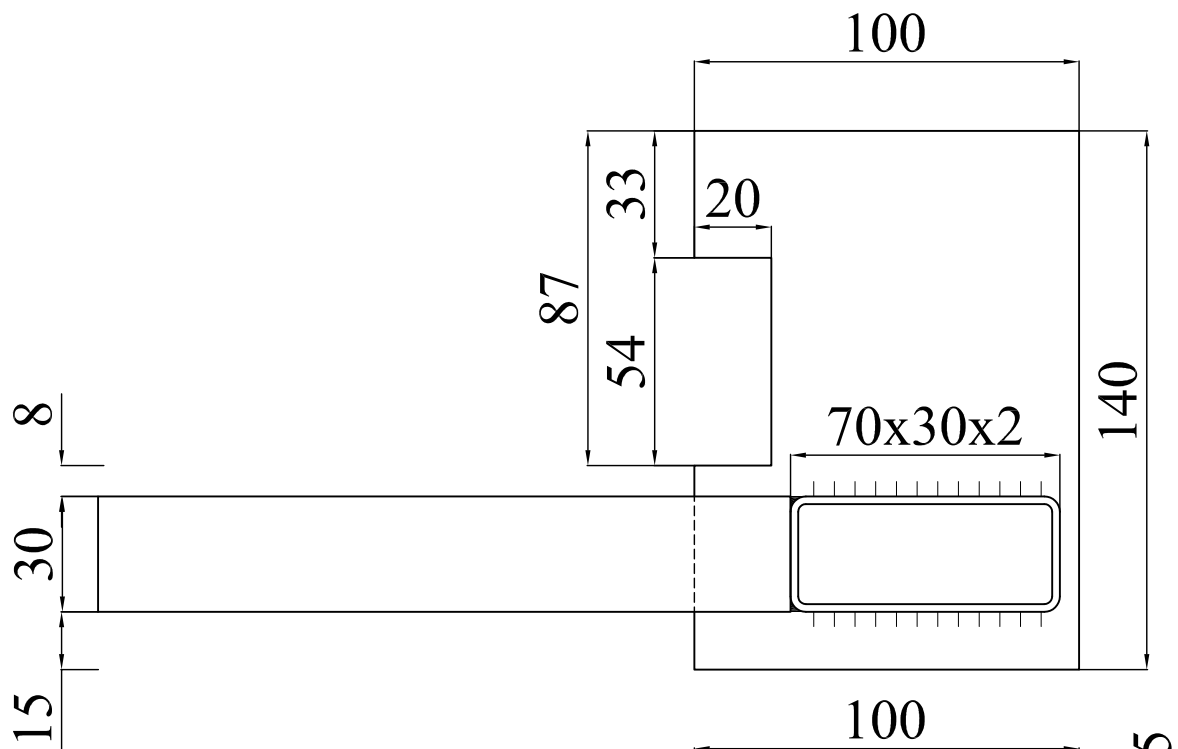
Kostrá pásovky M 1:5
výkres č.1 – pravá část



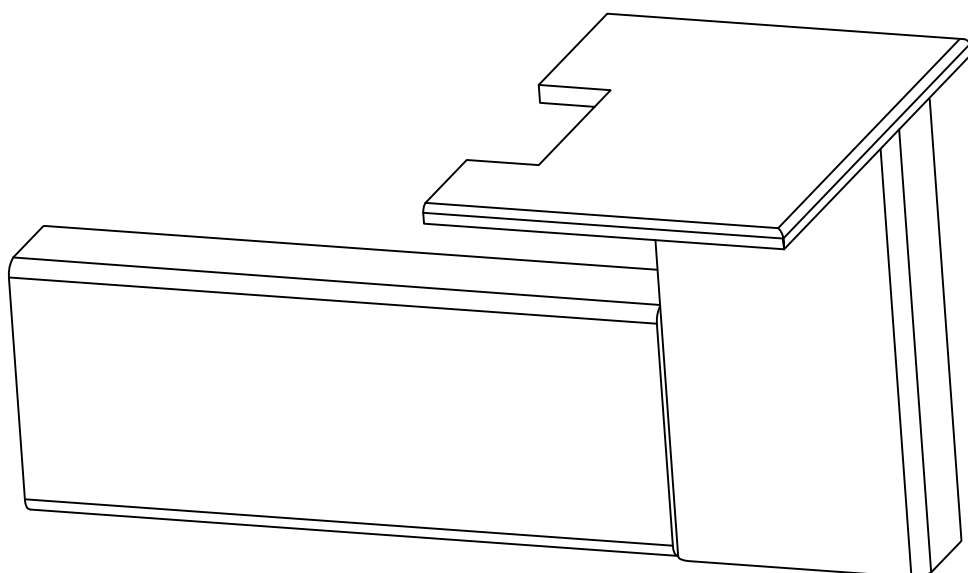
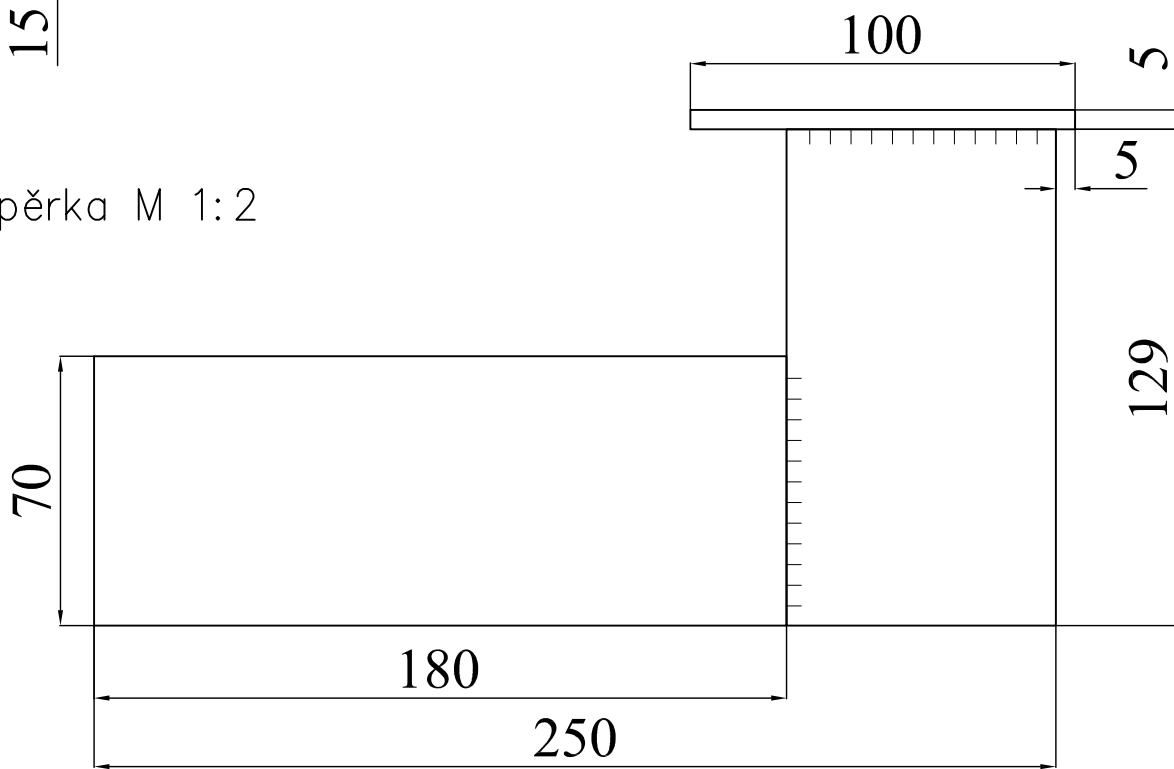


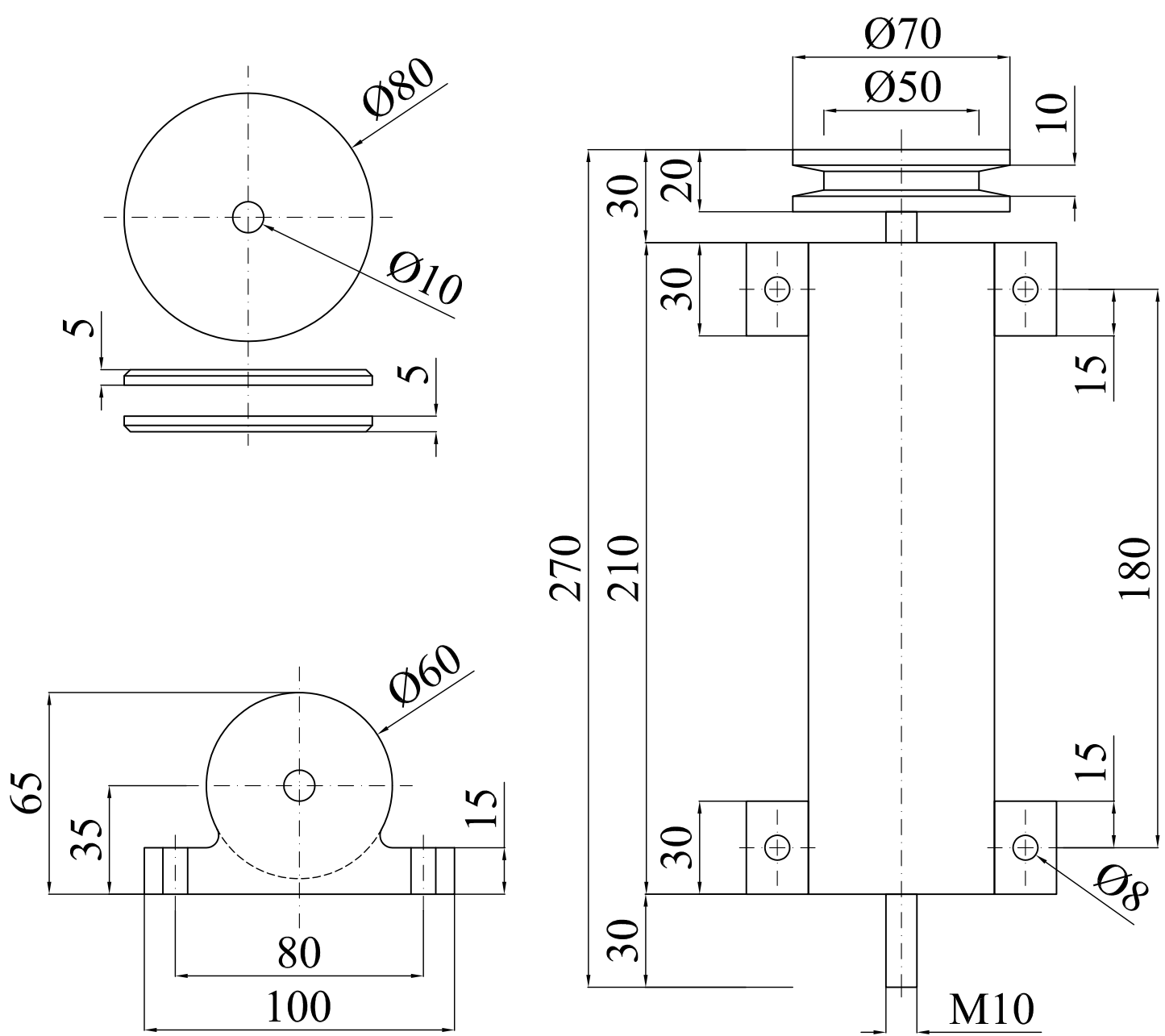
Kontaktní kolo M 1:2

(Rozměr brusného pásu: Obvod: 1540mm, šířka 50mm)

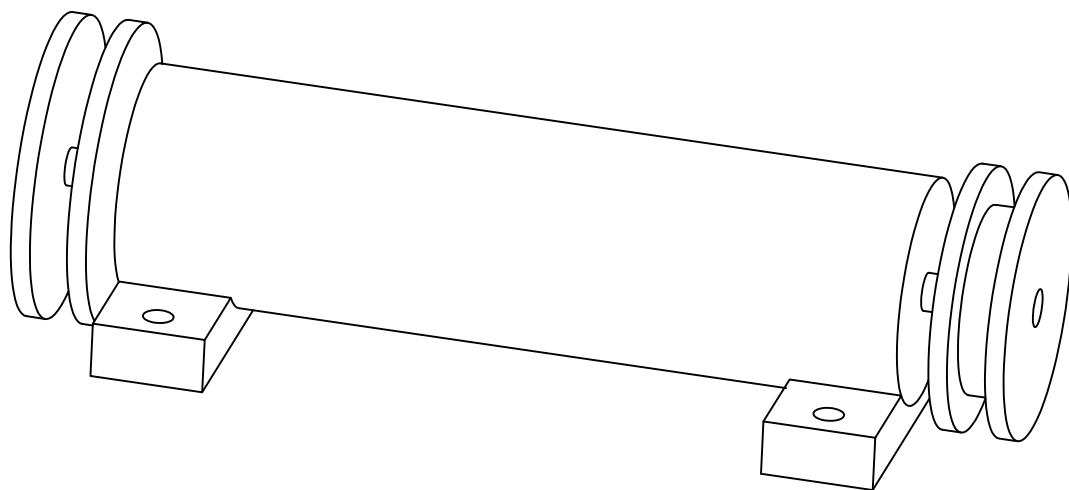


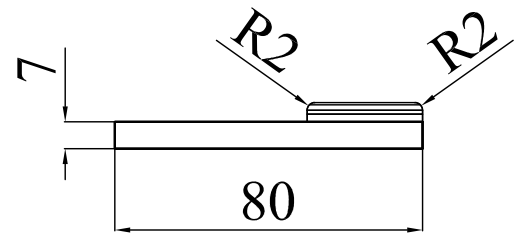
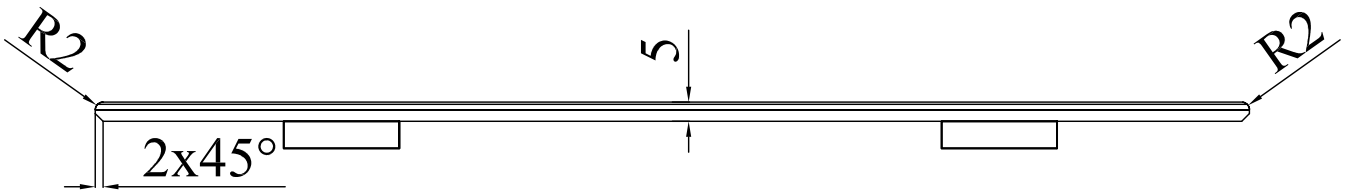
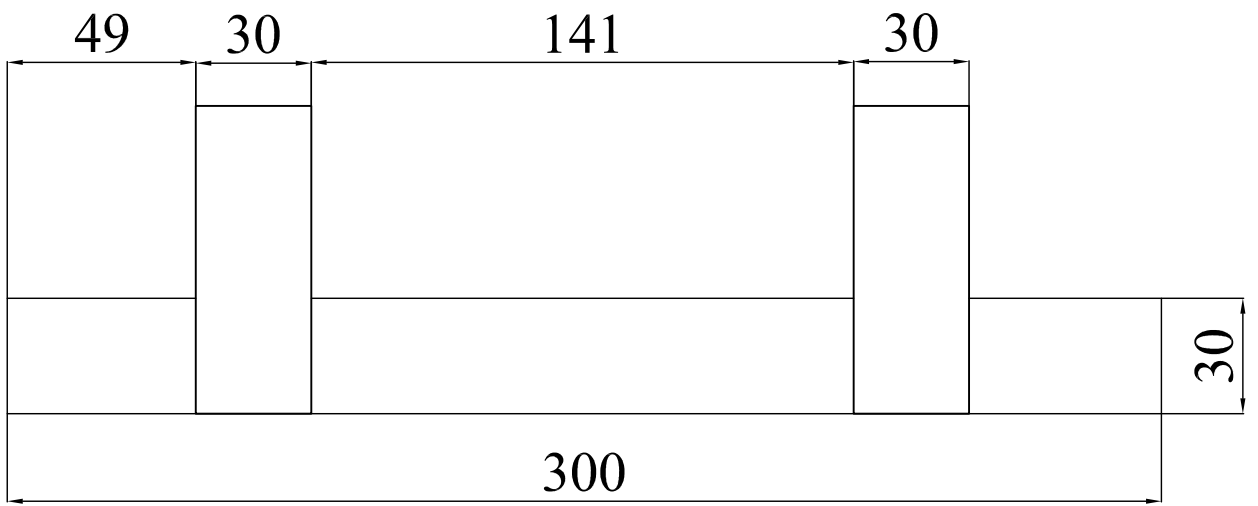
Boční opěrka M 1:2



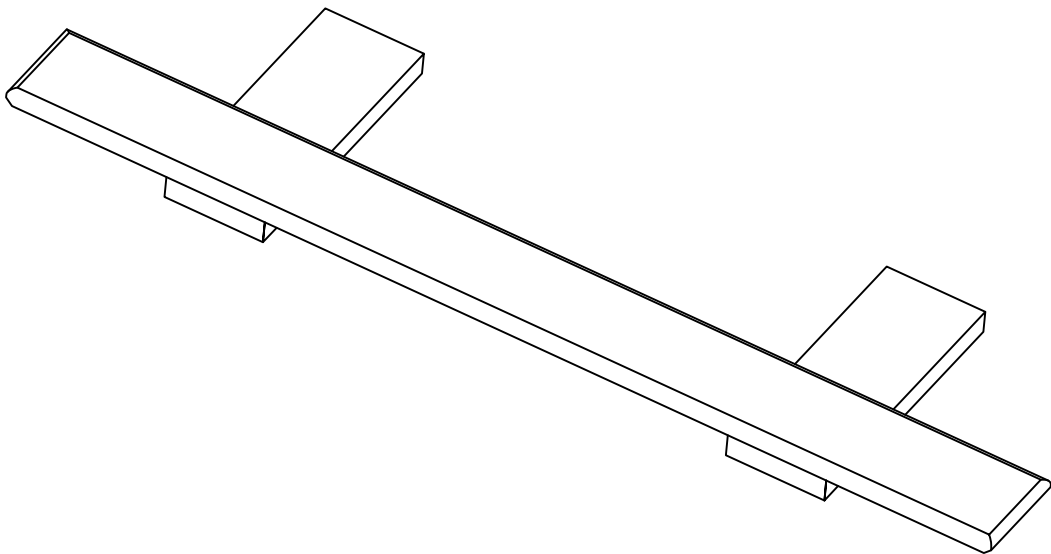


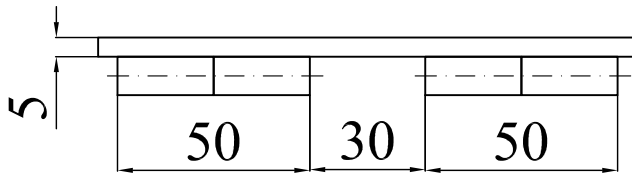
Hřídel KDR typ HOP160 – M 1:2



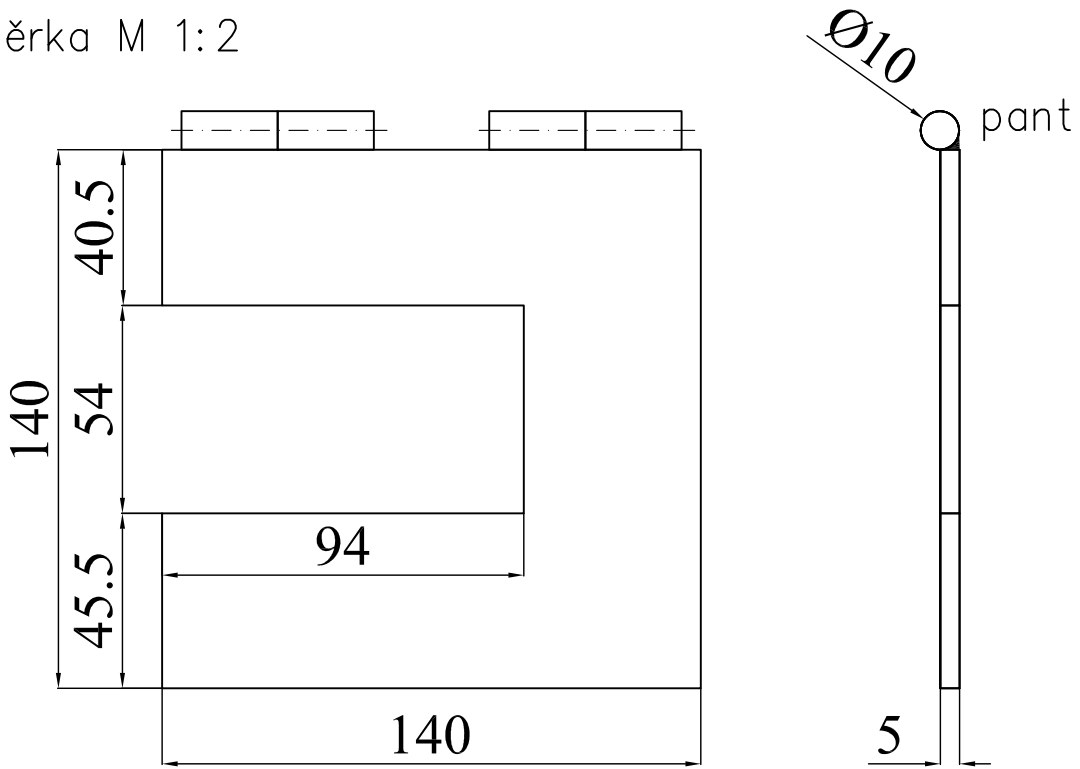


vodorovná lišta M 1:2

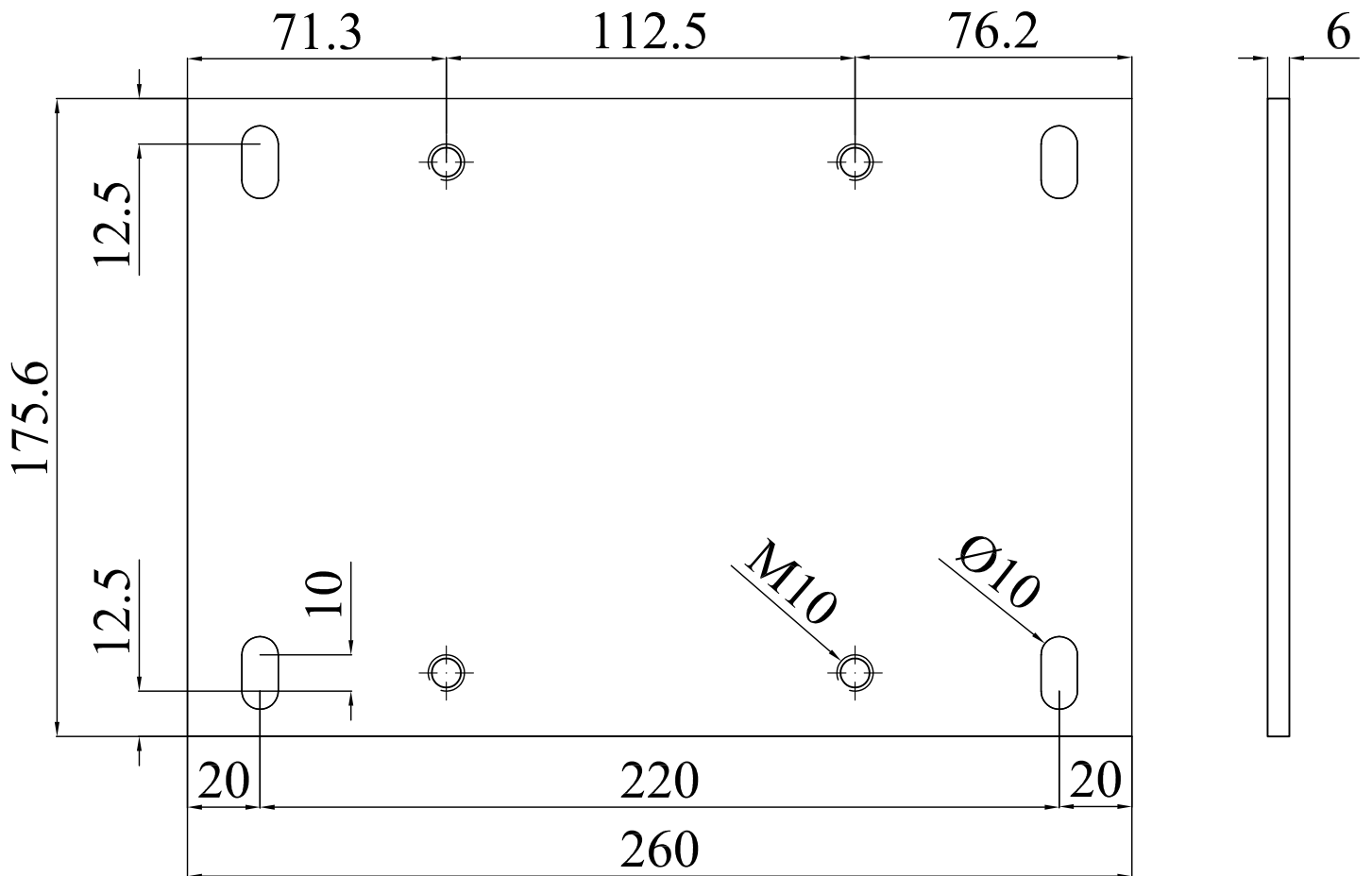


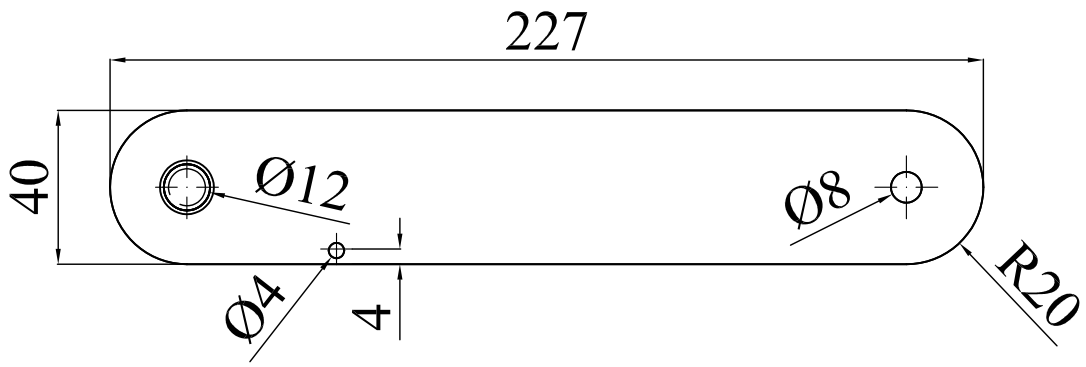


Vrchní opěrka M 1:2

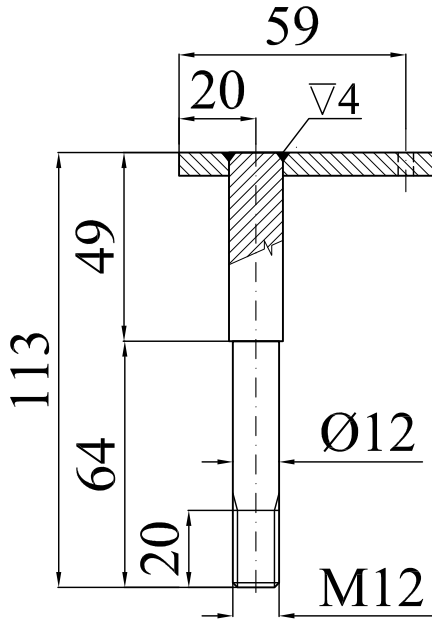


Základna motoru M 1:2

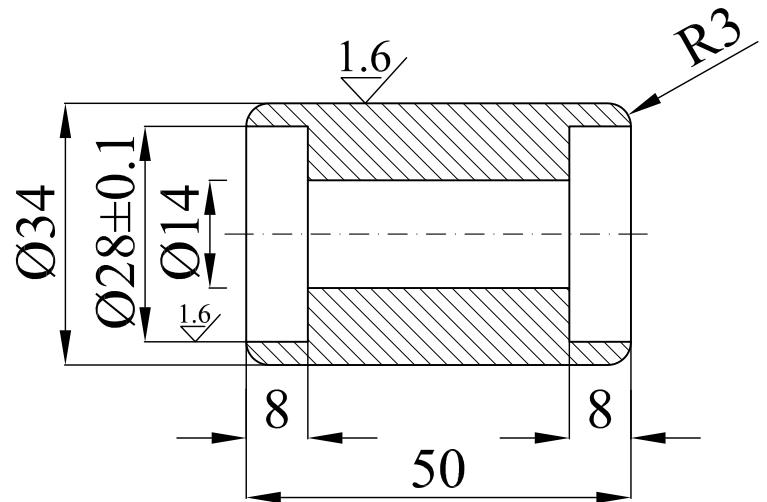




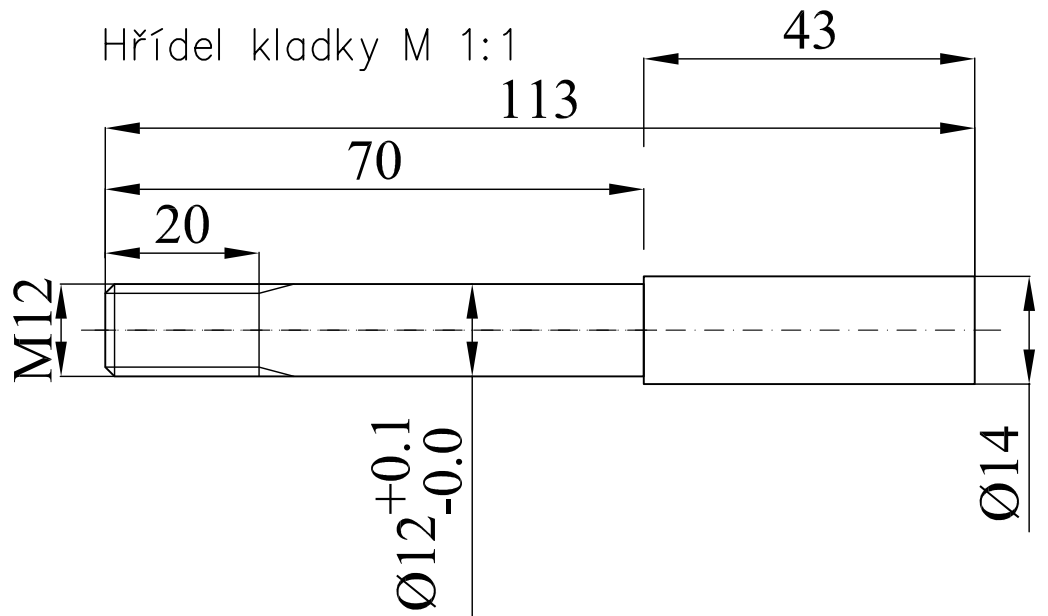
Natahování pásu M 1:2

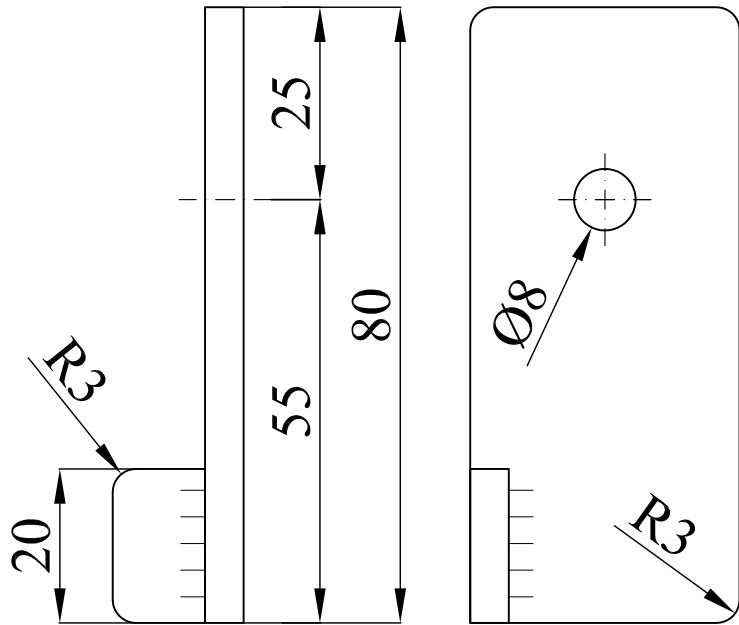


Silonová kladka M 1:1

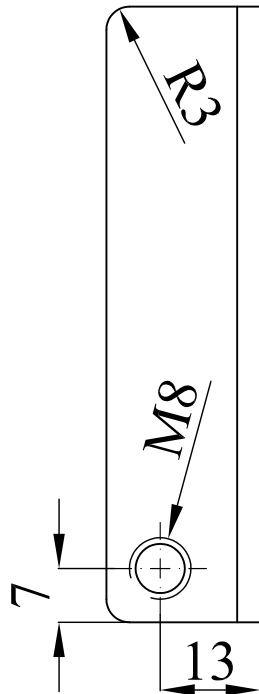
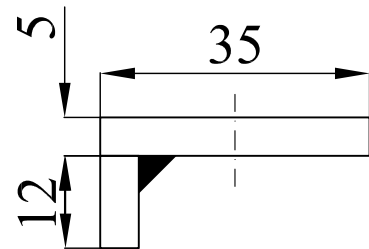


Hřídel kladky M 1:1





otočná část rolny na hřídeli M 1:1



základna rolny na kostře M 1:1

